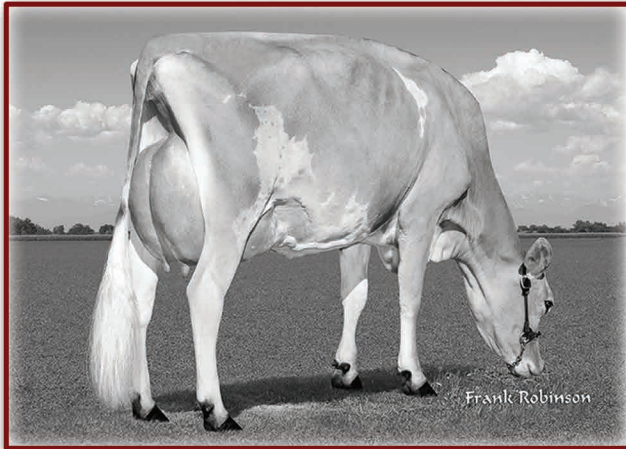


Cantendo Acres-Grazeland Jerseys Dispersal

100 Registered Jerseys Sell | Milking Herd and Close-Up Springers

December 5, 2015 | 11:00 am | at farm in Creston, Ohio

The Kind We Breed!



Grazeland Plus Krystaleen{4}, E-90%

1-10 305 3x 19,870 5.1% 1,006 3.6% 708 93DCR

3-0 305 3x 23,550 4.9% 1,161 3.8% 889 94DCR

5th place, 2015 Pot O'Gold Production Contest

Owned by McCalister Russell, CA

Selling

Her dam: **GR Grazeland Garden Krystallyn{3}, VG-87%**

3-5 305 26,820 4.4% 1,173 3.2% 869 97DCR

4-6 292 23,770 4.2% 997 3.3% 785 97DCR

She calved in again at 5-6 and is projected to over 24,000M actual.

She is due again ???? to ????

A full sister to "Krystaleen{4}":

Grazeland Plus Krystiana{4}, VG-86%

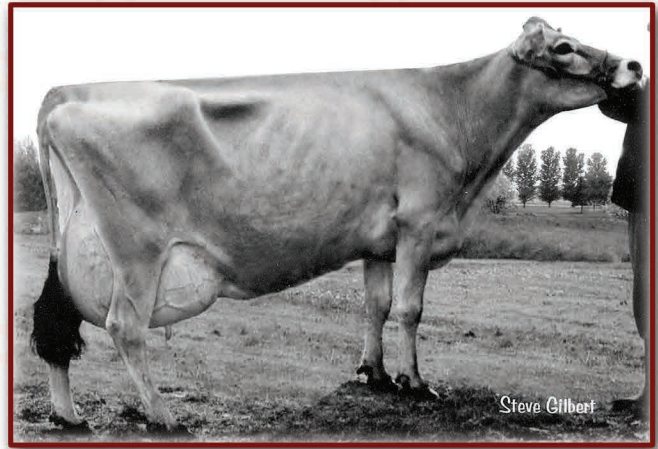
Projected to 20,176—1,003—709 ME at 2-1

She is due again ???? to ????

Ranks on the Top 1.5% GJPI Cow List

+1,140M +\$395CM GJPI +154

CDCB: GPTA 10/15 75%R JH1F



Grazeland Bold Davita, E-91%

8 lactations average 20,541—927—706 ME

One of our most prolific cows and several family members will sell.

A highlight

Grazeland Plus Delisha, VG-88%

Projected to 19,565—925—687 ME at 1-10

She is due again ???? to ????

2014 AJCA lactation average on 110 cows

21,317M 1,023F 757P

90 cows appraised average

85.2% with 18 EX 66 VG 6 DES

The herd ranks **45th for JPI herd average**

121 cows with 17% genotyped average: **+47 JPI**

5 cows rank on the Top 1.5% GJPI Cow List

**A production oriented herd
that uses top A.I. sires.**

Catalogs available two weeks prior to sale at

<http://JMS.USJersey.com>

or by request at jms@usjersey.com



JMS

Jersey Marketing Service

6486 E. Main Street, Reynoldsburg, OH 43068

614.322.4473 Sally Stine 614.322.4496 fax

JMS@USJersey.com | <http://JMS.USJersey.com>



Cantendo Acres | Grazeland Jerseys Ltd.

The farm's address:

9959 Canaan Center Road, Creston, Ohio

Farm located between Creston and Wooster,

2 miles south of SR 604.

Owners:

Russ and Cheryl King

330/435-4023 cgrazeland@sssnet.com

Tom and Rosalie Noyes 330/345-6516

For more information contact the sale staff:

Jason Robinson, Manager 614.216.5862

Greg Lavan, Marketing Cdr. 614.216.8838

Ron Mosser, Area Representative 614.264.0142

Erica Davis, Internet Marketing 614.361.9716

USJersey